

NEEDLES AND YARN

- Size 8 (5mm) 16-inch circular needle
- Size 10½ (6.5mm) 16-inch circular needle and set of 4 or 5 double-pointed needles
- Sandnes Alfa [85% wool, 15% mohair; 1¾ oz/50g/65 yds], 1 skein each in Navy (5483)—MC, Brown (3082)—CC1, and Off-white (1002)—CC2

GAUGE

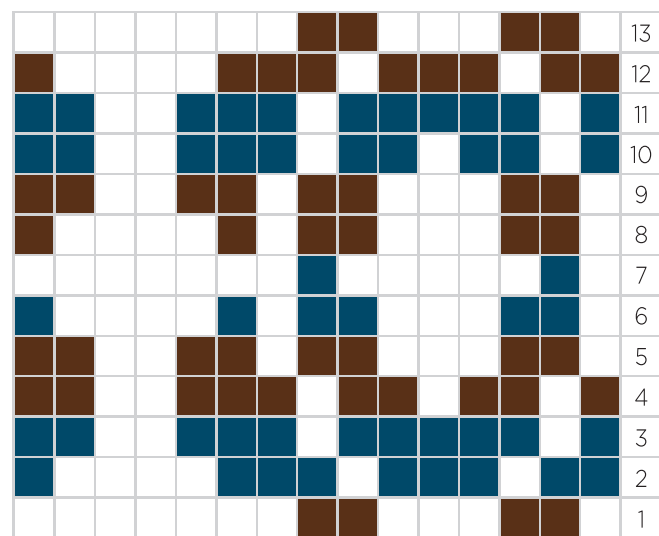
13 stitches = 4 inches (10cm)

PATTERN

- With smaller needle and MC, cast on 60 stitches. Place marker and join to knit in the round, being careful not to twist work.
- *Knit 1, purl 1,* repeating between *s to end of round.

- Switch to CC1. Knit 1 round.
- *Knit 1, purl 1,* repeating between *s to end of round.
- Switch back to MC. Knit 1 round.
- *Knit 1, purl 1,* repeating between *s to end of round.
- Switch to larger needle. Knit 1 round.
- Work 15-stitch repeat of chart, rows 1 through 13, changing colors as shown.
- After completing chart, work in stockinette stitch (knit every round) for 2 more inches (5cm) or to desired length, continuing to alternate between 2 rounds of MC and 2 rounds of CC1.
- Decrease according to formula on page 50, still alternating between colors, until 6 stitches remain.

- Cut working yarn, leaving 8-inch (20cm) tail. Using yarn needle, thread tail through remaining stitches, pulling tight to close top of hat. Weave in ends to finish.



15-STITCH REPEAT

