



The One-of-the-Many-Hats-I-Wear Hats

The One-of-the-Many-Hats-I-Wear Hat



The One-of-the-Many-Hats-I-Wear Hat is a simple newsboy cap with an extra casing for a cinch fitting. The pattern pieces are for an average adult woman.

The OOTMHIW Hat may be sewn from knits. The crown and hatband pieces include a seam allowance for knit fabrics. When sewing knits, please use a ballpoint needle and choose a stretch stitch.

Depending on your taste, the edge of the hat brim may be left with a raw edge for a modern, deconstructed look. If you prefer a cleaner look, please add an additional seam allowance along the curve of the brim to encase the seam.

Piece list

- Hat brim piece: Cut 2 on fold (+ cut 1 from fusible interfacing material)
- Main crown piece: Cut 6
- Hatband piece: Cut 2 Rectangles 22 in. (56 cm) x 1 ½ in. (4 cm) across the grain (perpendicular to the courses, parallel to the ribs)
- Casing piece: Cut 1 Rectangle 22 in. (56 cm) x 2 ¼ in. (5.5 cm) across the grain (perpendicular to the courses, parallel to the ribs)
- Notions: Approx. ¾ yard (70 cm) ¼ inch (12 mm) ribbon, lightweight fusible interfacing, polyester sewing thread, a bit of ¼ inch flat elastic (optional).

Notes: If sewing for a child, reduce pattern piece size by 30%. If sewing for a baby, reduce the pattern pieces by 50%.



The One-of-the-Many-Hats-I-Wear Hats

The following instructions are just one method and sequence for sewing this newsboy cap. Please use your preferred methods.

Instructions

Cut the hat pieces according to the piece list.

Lay your pattern pieces on your pre-washed, pressed fabric with respect to the grain. If using a knit fabric, the grain runs parallel to the ribs, perpendicular to the courses.

(For this example, I have used an old sweater)

Illustration





The One-of-the-Many-Hats-I-Wear Hats



Stitch the main crown pieces right sides together along the curving edges. Begin at the point and stitch downward.





The One-of-the-Many-Hats-I-Wear Hats



Iron the fusible interfacing to the wrong side of one of the hat brim pieces.





The One-of-the-Many-Hats-I-Wear Hats

For a brim with a clean edge (encased seam): Pin the two hat brim pieces right sides together and stitch along the curved edge. Trim the seam allowance to reduce bulk and/or notch along the curves. Turn the brim right side out and press. Edge stitch along the curved edge. Stitch another line approximately the width of the presser foot away from the first stitching line as desired.



For a brim with a raw edge: Place the brim pieces wrong sides together and stitch along the curved edge. You may want to use a very light spraying of temporary textile adhesive between the brim layers to make sure they lay exactly aligned. Edge stitch along the curved edge. Stitch another line approximately the width of the presser foot parallel to the edge stitched line as desired. Trim the brim edge if necessary to make the two layers even.



The One-of-the-Many-Hats-I-Wear Hats

Lay the finished brim piece between two of the hand band pieces in the center.

With the brim sandwiched between the two hat band pieces, pin the open edge of the brim to the edges of the hat band pieces.

Stitch along the entire long edge, catching the brim between the layers.





The One-of-the-Many-Hats-I-Wear Hats

Stitch the two short ends of the brim+hat band piece to form a ring.



Turn the brim+hat band piece right side out and press. Topstitch along the brim+hat band seam and continue edge stitching all the way around as desired.





The One-of-the-Many-Hats-I-Wear Hats

Important: Because ribbons may pose a hazard to young children, if sewing for a baby or young child, it is recommended to securely tack the ribbon within the casing, or leave off the casing and ribbon altogether.

Press the seam allowances of the short ends of the casing piece toward the wrong side. Stitch the seam allowances in place.

Press this third hat band piece in half lengthwise.





The One-of-the-Many-Hats-I-Wear Hats

Pin the resulting casing to the top edge of the brim+hat band piece.



The ends of the casing will lie at either side of the back seam.





The One-of-the-Many-Hats-I-Wear Hats

Baste stitch the casing to the right side of the hat brim along the top edge.





The One-of-the-Many-Hats-I-Wear Hats

Pin the brim+hat band+casing piece right sides together to the hat crown in four equidistant places. Stitch the brim+hat band+casing piece to the crown. Be sure to catch all layers of material in your stitching line. Stretch the material of either the crown or brim as you stitch if necessary to have the two pieces fit one another. Remove the pins before they approach your serger's knife.

Turn your hat right side out.

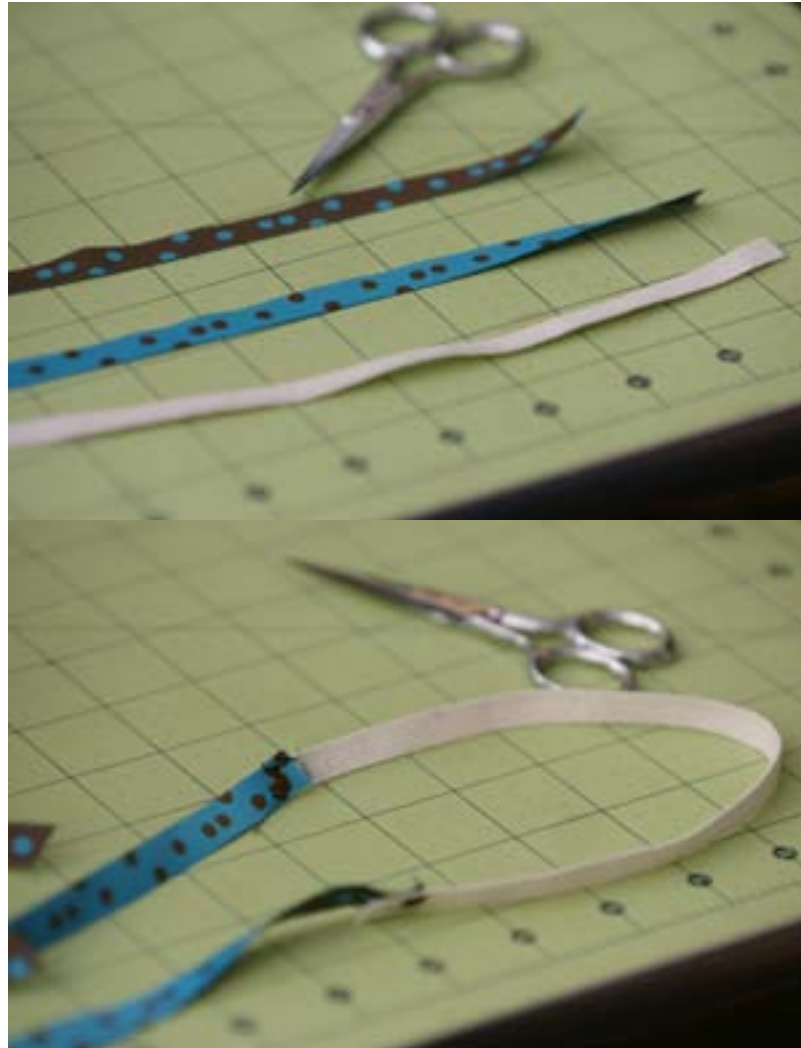




The One-of-the-Many-Hats-I-Wear Hats

Optional: Cut your cinching ribbon in half. Stitch a bit of elastic securely between the two bits of ribbon.

This will give your hat extra fit.





The One-of-the-Many-Hats-I-Wear Hats

With the aid of a safety pin or bodkin, insert the ribbon into the hat band casing.

Cinch to the desired fit and tie in a bow.

Important: If you are sewing for a baby or young child and have included the ribbon casing, tack the ribbon to the hat securely through the casing at the center front with a bar tack, so that the ribbon may not be pulled out. You may also tack the ribbon in place off to one side from the center front and conceal this tack with an embellishment. Trim the ribbon, so that it does not hang at a length where it might catch.





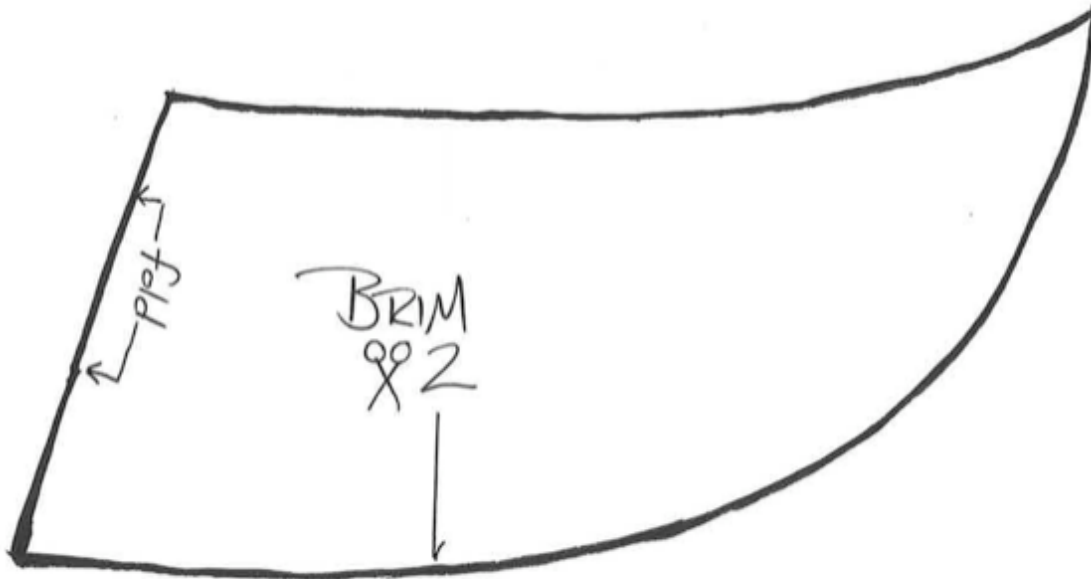
The One-of-the-Many-Hats-I-Wear Hats

All done! We wish you much joy and success with your sewing project!





The One-of-the-Many-Hats-I-Wear Hats





The One-of-the-Many-Hats-I-Wear Hats

